

ACOUSTIC | CEILING | PANEL | PARTITION | FLOORING



**SLIDING / FOLDING PARTITION SYSTEM**

✉ [ecotoneacoustics@gmail.com](mailto:ecotoneacoustics@gmail.com)    🌐 [www.ecotoneacoustics.com](http://www.ecotoneacoustics.com)    ☎ 9727710701/9978966933

📍 912-13 Aaron Spectra , Behind Rajpath Club , Bodakdev, Ahmedabad

# KEY FEATURES



Panel size can be customized



Extendable/  
Telescopic panel



Water resistant  
option available



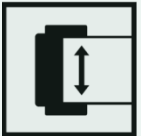
Panel height up to  
6 meters



Soundproof  
partitions – up to  
60 dB



FR rating



With wall jamb



Environmental  
friendly material  
used



Single leaf door  
option is available



Recyclable material



Available with  
partition safe lock



Lower maintenance  
free



MODERN  
DESIGN

Adopting modern  
technology



ECO  
FRIENDLY

Environmental  
friendly and  
recyclable material



QUALITY  
100%

Utmost  
performance with  
high durability &  
functionality



WARRANTY  
STANDARD

2 years warranty  
against  
manufacturing  
defects.



## **Acomo Features**

**Manual operated  
acoustic movable  
system**

**Height 6 meter  
achievable in this  
system**

**Integrated pass doors,  
vision windows options  
available**

**Multiple room  
configuration cab be  
created**

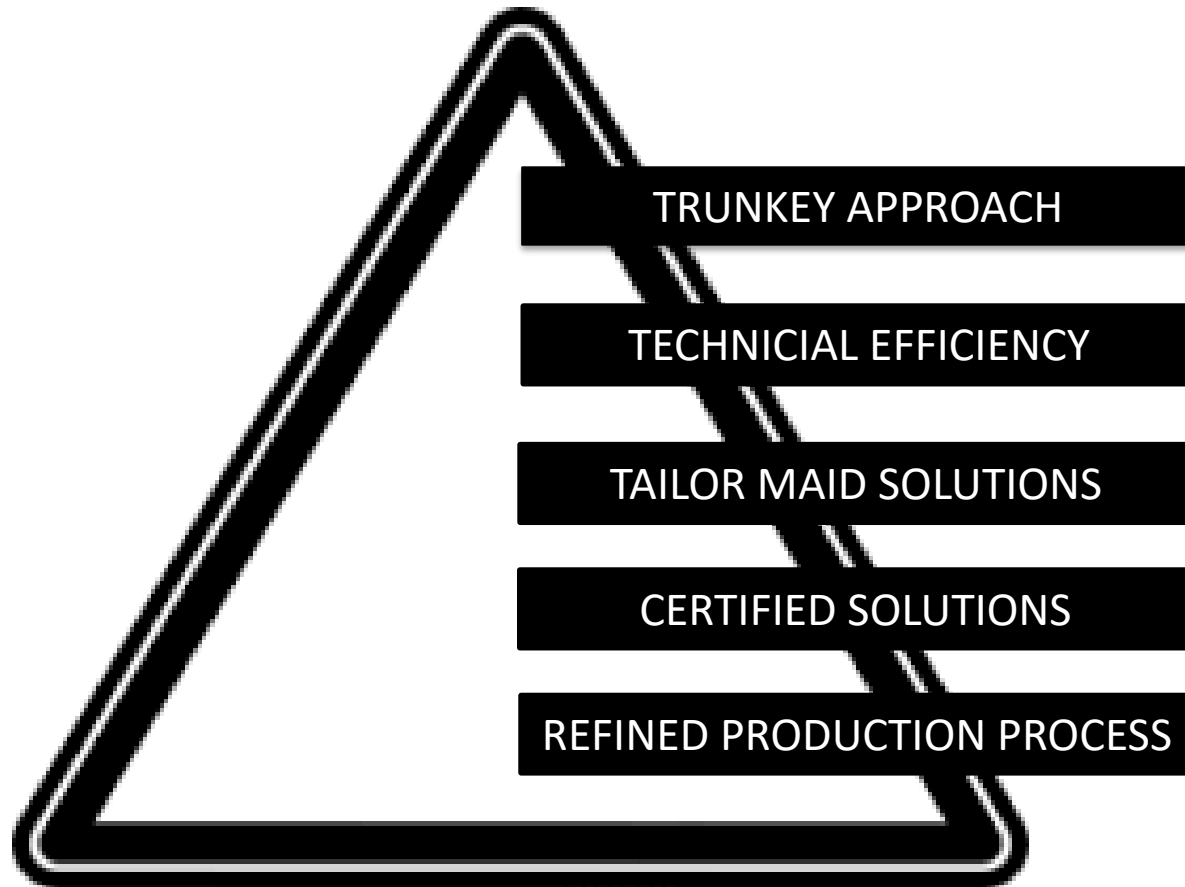
**Curvature design  
possible**

**ACOUSTIC MOVABLE PARTITION SYSTEM- INFORMATION**

<b>TYPE</b>	<b>Silico – Acoustic movable walls</b>
<b>Panel suspension</b>	Top hung only, no floor track requirement
<b>Track system</b>	Single or twin point
<b>Panel thickness</b>	100mm
<b>Height</b>	6 Meter
<b>Panel width</b>	800-1200mm
<b>Frame construction</b>	T 6063 alloy Aluminum / Inner steel sections Grade 350
<b>Face material</b>	16 mm MDF, HDF, WPC plain or perforated panels, wood wool, chipboards etc
<b>Fire safety</b>	Optional Class I or O
<b>Vertical seals</b>	6 layers of EPDM extruded seals with one layer of magnetic vertical seals
<b>Retractable seals</b>	Natural black EPDM solid soft seals incased in aluminium profiles, additional rubber sweeps seals
<b>Operations</b>	Manual
<b>Closure</b>	Expanded lever panels
<b>Pass Doors</b>	Single within the panels
<b>Sound insulation</b>	51 dB(A)
<b>Weight</b>	Approx 40-45 kg/sq M



## VALUE PROPOSITION



## ACOMO VALUE PROPOSITIONS

Ecotone Acomo brings premium category solutions for space optimization and management, quality and workmanship has been our USP since inception, with unlimited configurations and the fully tailor-made approach we bring you the best fit solution for specific project requirement.

We have worked with topmost architects across India and abroad have successfully completed more than 100 projects across Asia for both private and government segment. Our system is specified for international conventions centers for different state governments.

## Movable system definition

The acoustic sliding folding partition system is totally top supported, with no floor tracks required, with linear wall jamb, manually operated panels of convenient sizes as mentioned in above table, and can be stacked in the area at ends with various parking option. The system when closed, it provides a proper wall with a complete sound barrier. The system sound reduction is 51 dB tested by laboratories. Acoustic performance can be increased if required.



## **Acoustic panels**

The panel has parametric aluminum frame with 10mm exposed trim with welded heavy-duty inner steel frame face of the panels is fixed with 16mm MDF boards on both sides with steel plate backing, overall thickness of panels is 100 mm and width of panels shall be between 800-1200 mm as per design requirements. The panel's cavity shall be insulated with 96kg/m<sup>3</sup> fire and water proof Rockwool slabs and shall have EPDM seals on top/bottom and sides leaving no airgaps shall offer high acoustical properties.

Weight of panels is 40-45 Kg per sq. meter having good quality interlocking corner finish. All basic panels will be equal in module. The height of each panel's shall be adjusted as per site requirements.

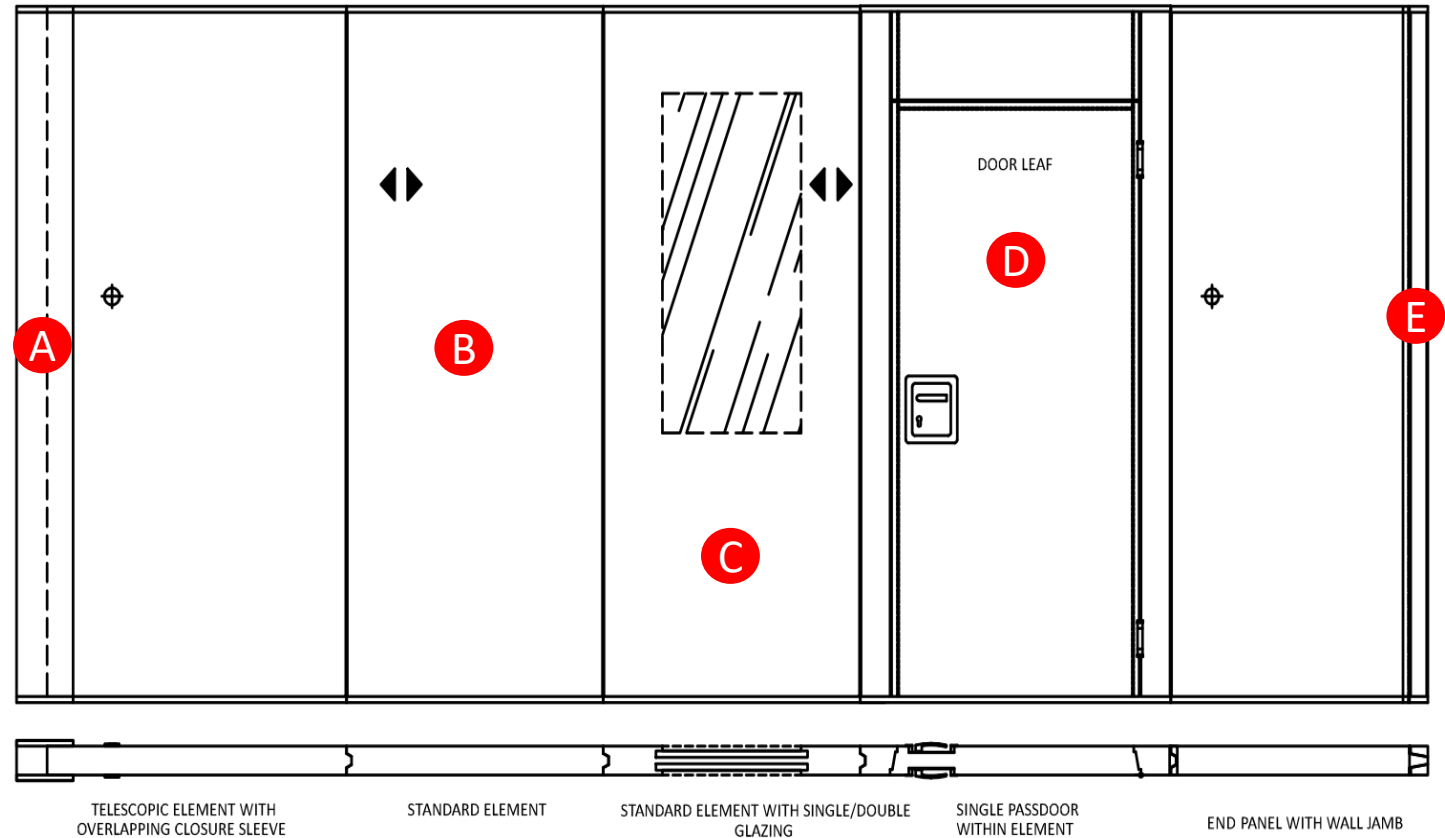
## **Panel weight:**

The panel weight 40-45 Kg/SQMT without finish, light weight panels but designed in such a way that it doesn't allow pilferage and bending event hit by heavy movements.

**A. Telescopic panel :** A standard panel fitted with a 300mm extruded aluminum frame finished to match panel faces. It has the ability to extend or retract 150mm, overlapping the standard panel to which it is attached. once its is fixed, it helps to enabling the wall to be locked off completely and make sure it doest not allow sound to travel between divided areas.

**B. Standard panels :** These are regular panels with acoustic properties.

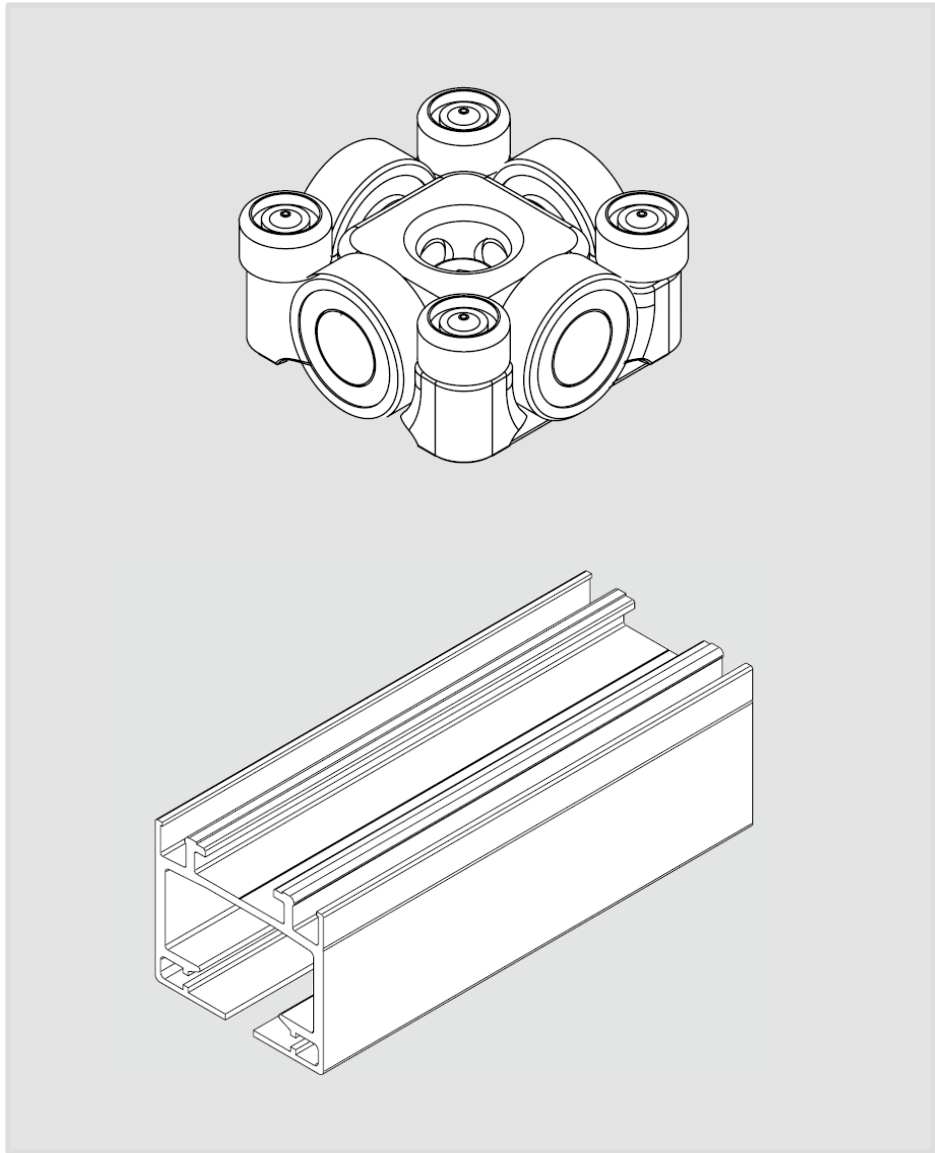
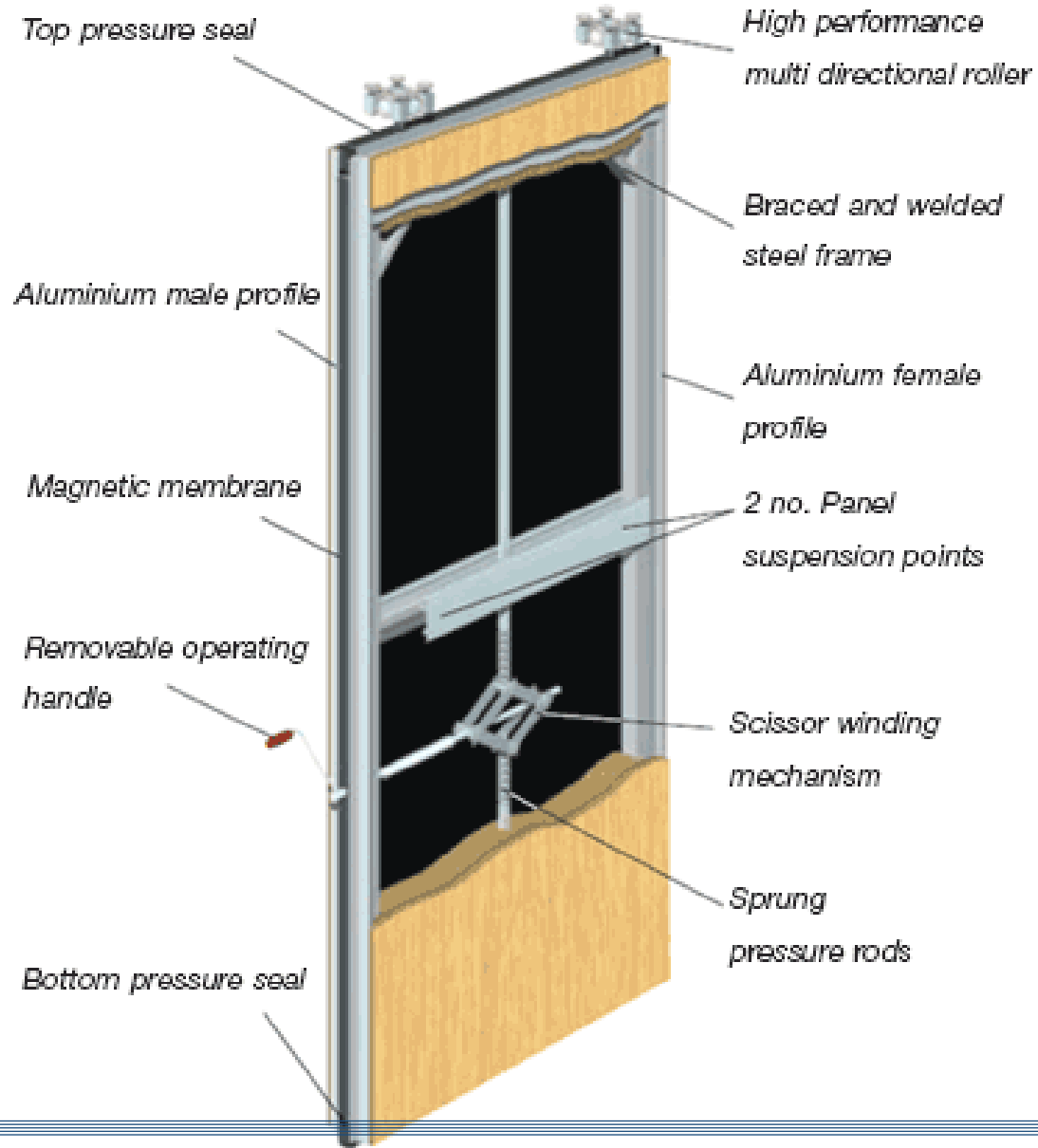
**C. Vision panels :** once partition is closed, vision panels allows to view other side without opening or moving the partitions.



**D. Pass door :** Pass Doors provide convenient and independent access through the partition without the need to move any of the panels.

**E. Wall Jamb :** Extruded aluminum jambs will be fitted at either end of the operable wall opening to match panel faces. The adjustable jamb is able to compensate for vertical discrepancies of up to 10mm. The customer is responsible for providing adequate fixing in walls to support appropriate weights hung off adjustable jambs.

# TYPICAL DETAILS – Panel construction



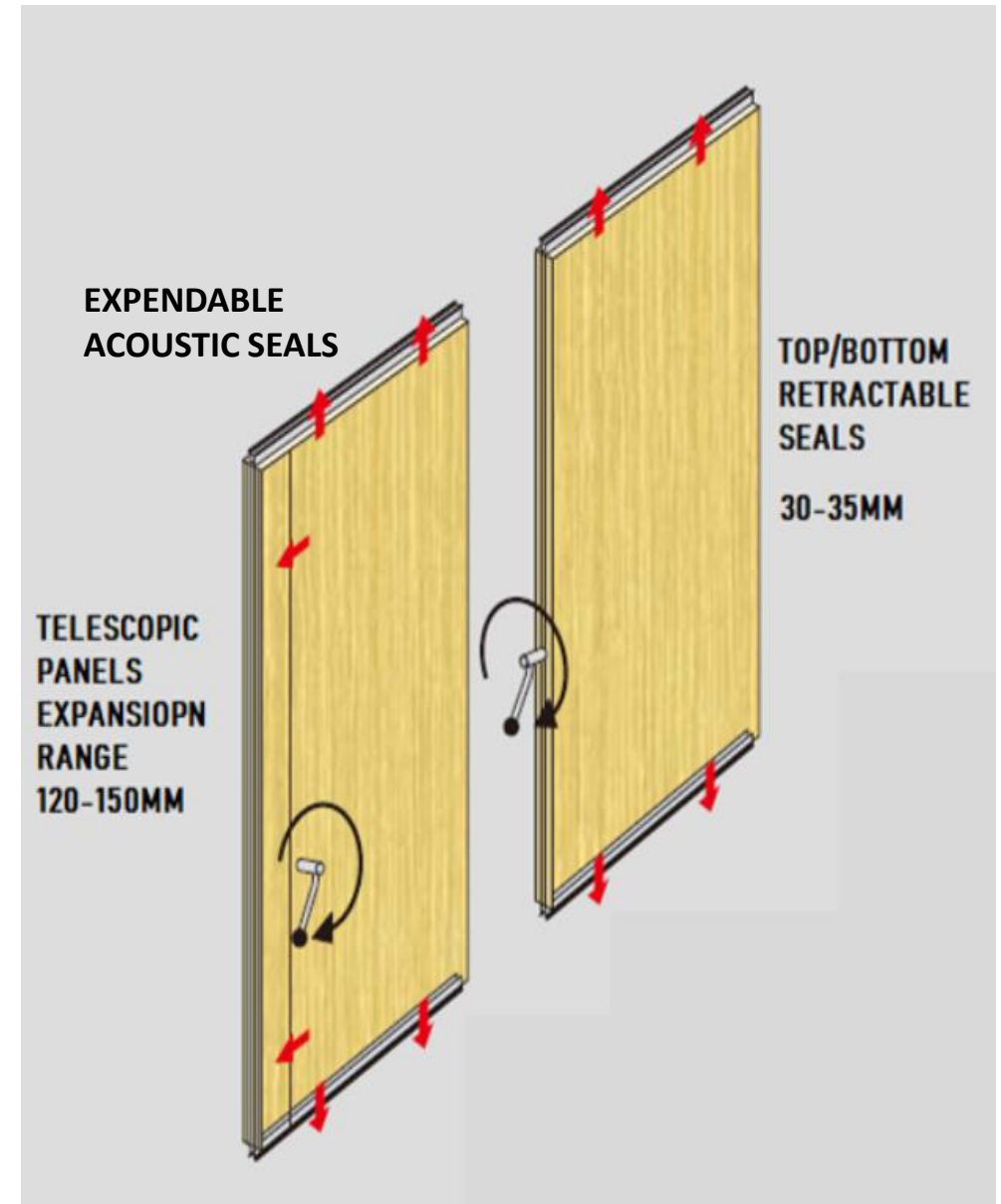


### Retractable mechanism:

The top and bottom retractable seals shall be made of extruded compact EPDM rubbers having additional rubber sweep seals covered in aluminum boxes shall be operated by handle inserted in the panel stile, turning the handle shall simultaneously extend or retract the top and bottom seal through steel and spring mechanism providing approx force 2KN, multiple crank systems help us to cover undulation in floor level.

### Acoustic seals:

all seal are made of EPDM rubber which used in top and bottom and it also used in lever closer seal for operable wall system. Retractable seal drop is 25-30 mm on top and bottom. The end panels of the opening opposite to the closer will be fitted with a wall jamb. Panels shall have multiple vertical EPDM inner and outer seals firmly inserted in utilized grooves; the middle joint seals shall be magnetic one.



## Acoustical insulation Material:

- Mineral wool fire safe with 96Kg/m<sup>3</sup> density shall be used; all insulation material shall be compliance with UL 94 and IS 8183 parameters. An additional 2.5mm thick mass loaded barriers having 2000Kg/m<sup>3</sup> density shall be used at extended bottom/top and lever closer parts.
- Note- Acoustic rating can be customized with some minor changes in materials

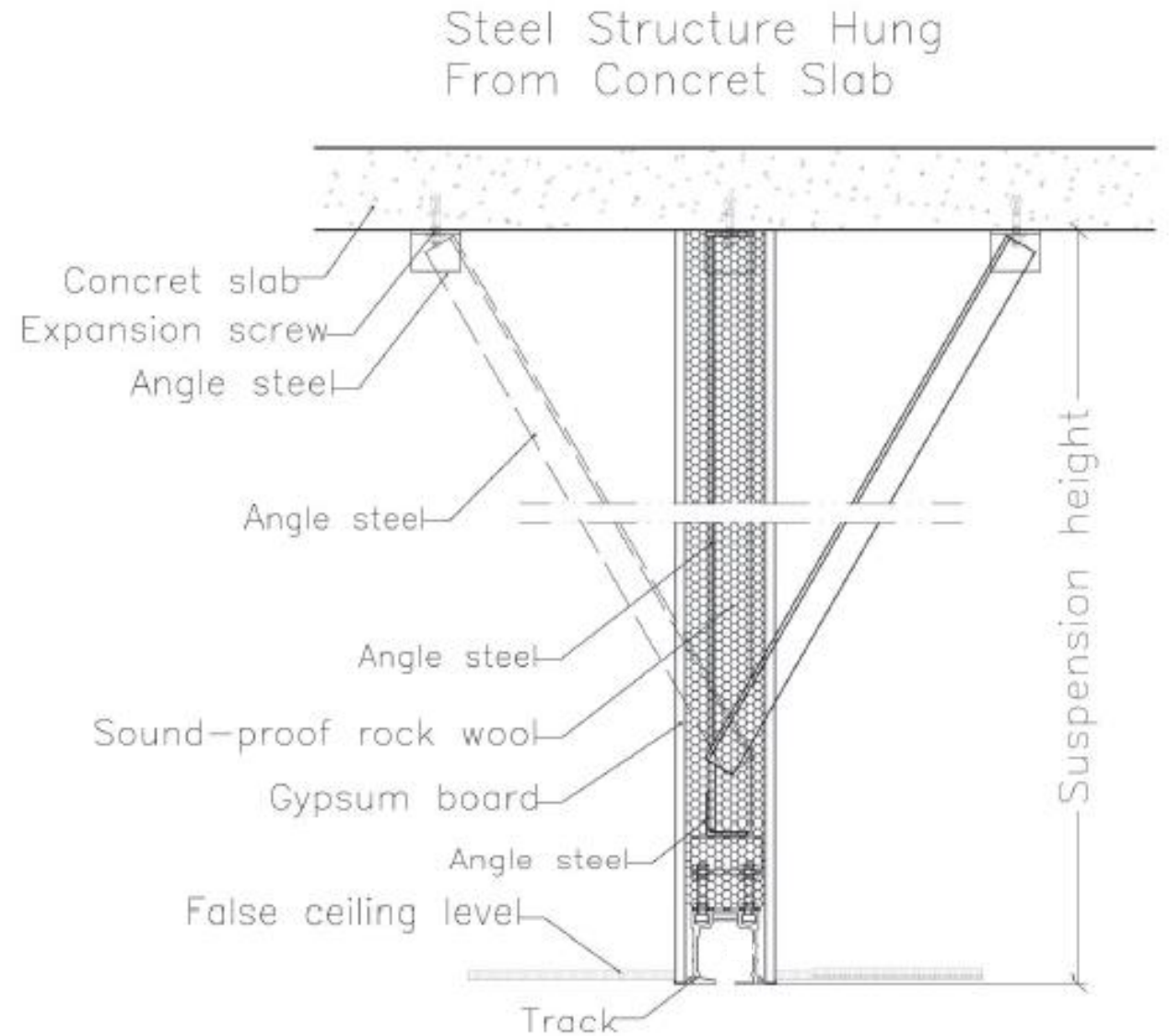
## Sound proof baffling

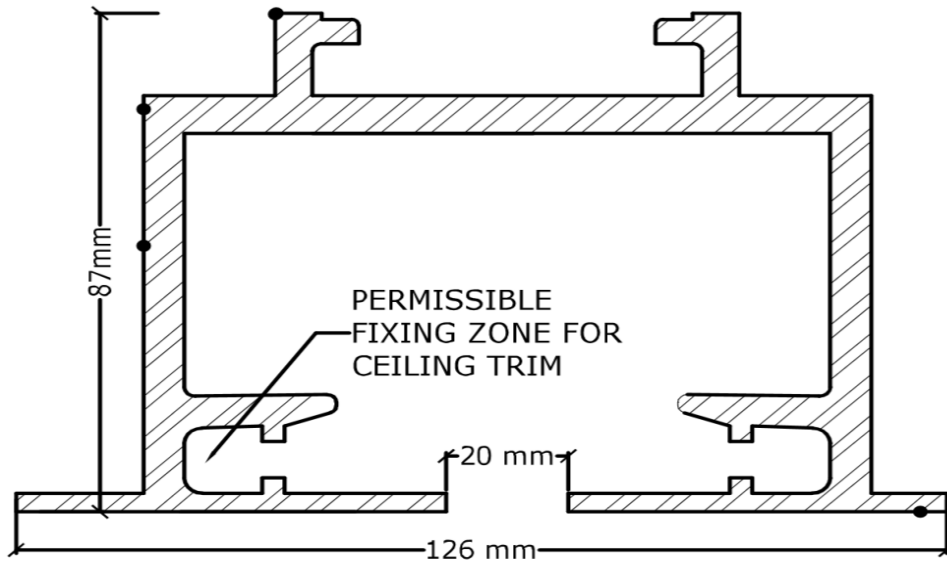
Baffling plays most crucial role when high acoustic is needed, should be done carefully and matching to panel's acoustic rating, MDF/gypsum boards shall be housed with the main track grooves and inner cavity shall be finished by Rockwool insulation.

## Structure top arrangement

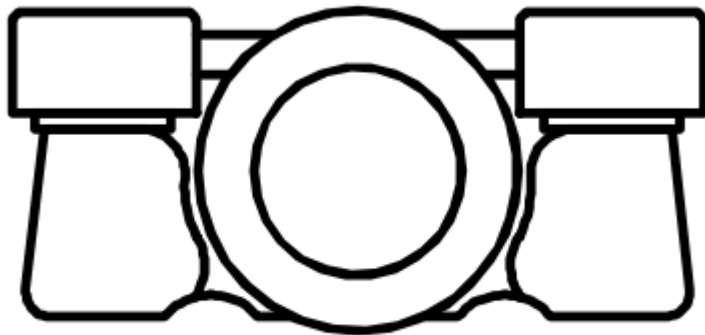
Structure at site shall be done appropriately after load calculations, all structure shall be rust free coating and shall be either fixed with 8mm welding or 12mm anchor fasteners to the main beam provides by client. Z plates, MS angles, ISMC channels and hollow rectangular or square sections shall be used of either TATA or Jindal make.

Design shall be given before executions for consultant approvals.





TYPE-R HEAD TRACK



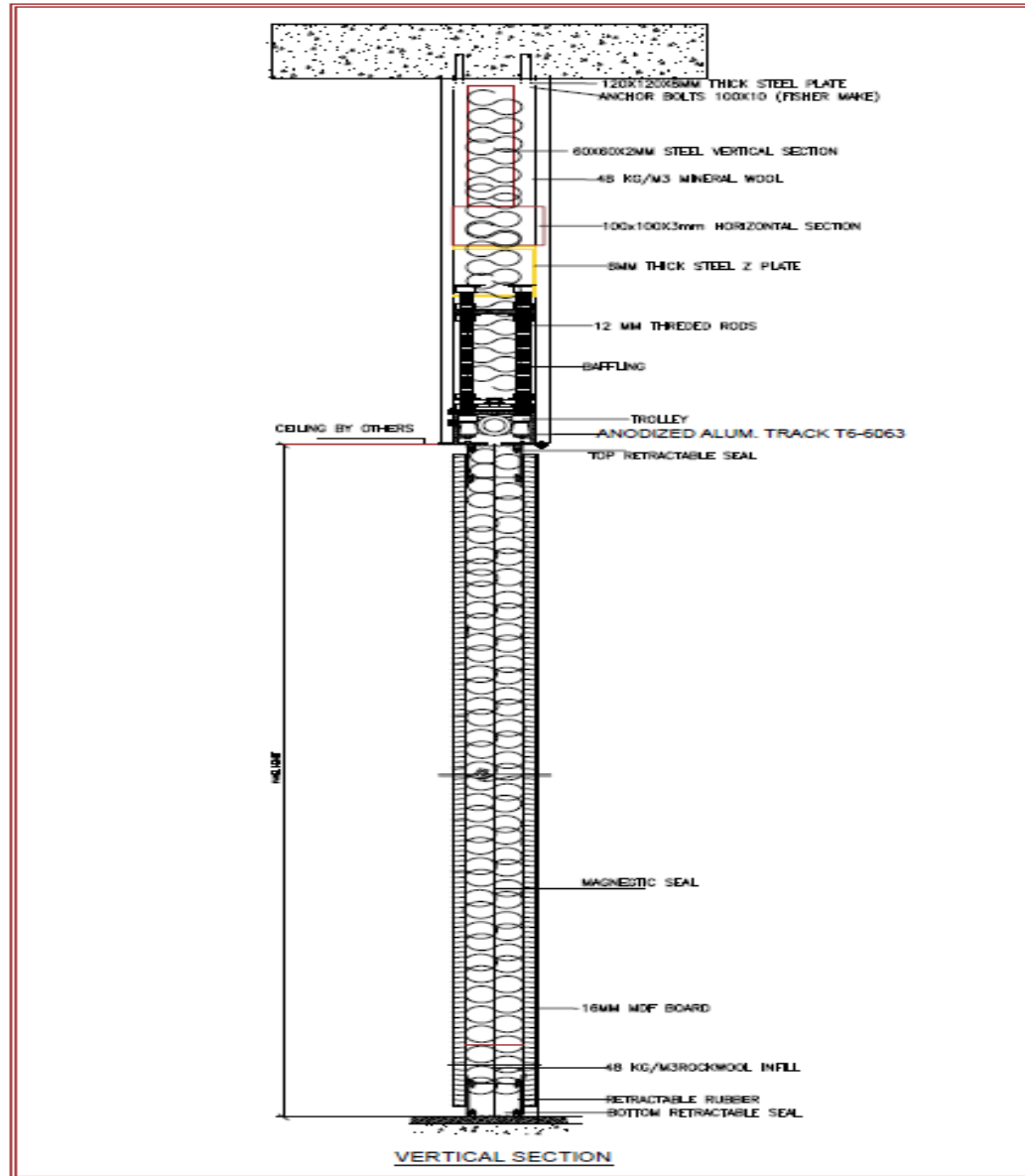
## Track 100 Series Suitable for panel Height between 3 to 6 meters

With variable track options, we can achieve height up to 18 meters, 841 series track is specially designed and developed by Acomo with 100% virgin T6-6063 alloy for extra height and can bear load up to 1000 Kg/m which is highest in the category. The track weight itself is 22Kg/3meter highest in the category, interlocking stainless steel clip locking method shall be used for track alignment having zero tolerance level.

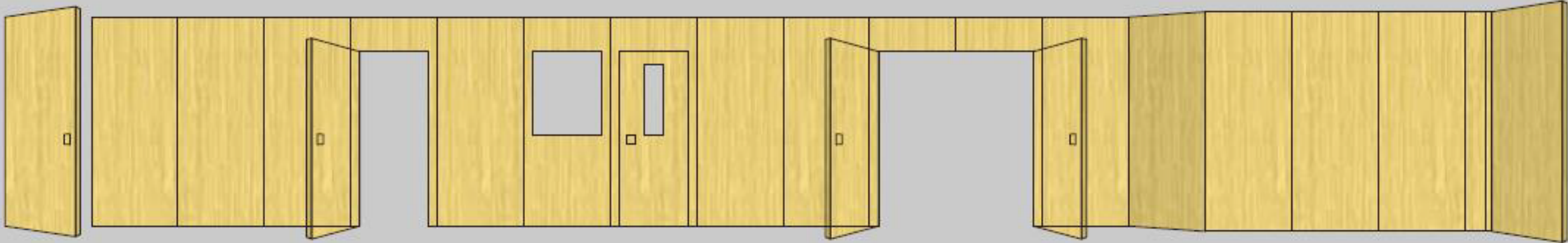
## Panel carrier

Ecotone Acomo uses multiple but calculative options for panel's movements, PC79 series developed for medium height panels up to 7 meters for a smooth run, made by eight ball bearing carrier with horizontal and vertical rotating to meet the best wear resistance and extra smooth functionality, the high carbon chromium bearing steel has reached to a strength standard of 8.8 grade, can greatly improve the durability and lifetime of operable partition system with interlocking steel clips locking for track alignment.

Silico elevation



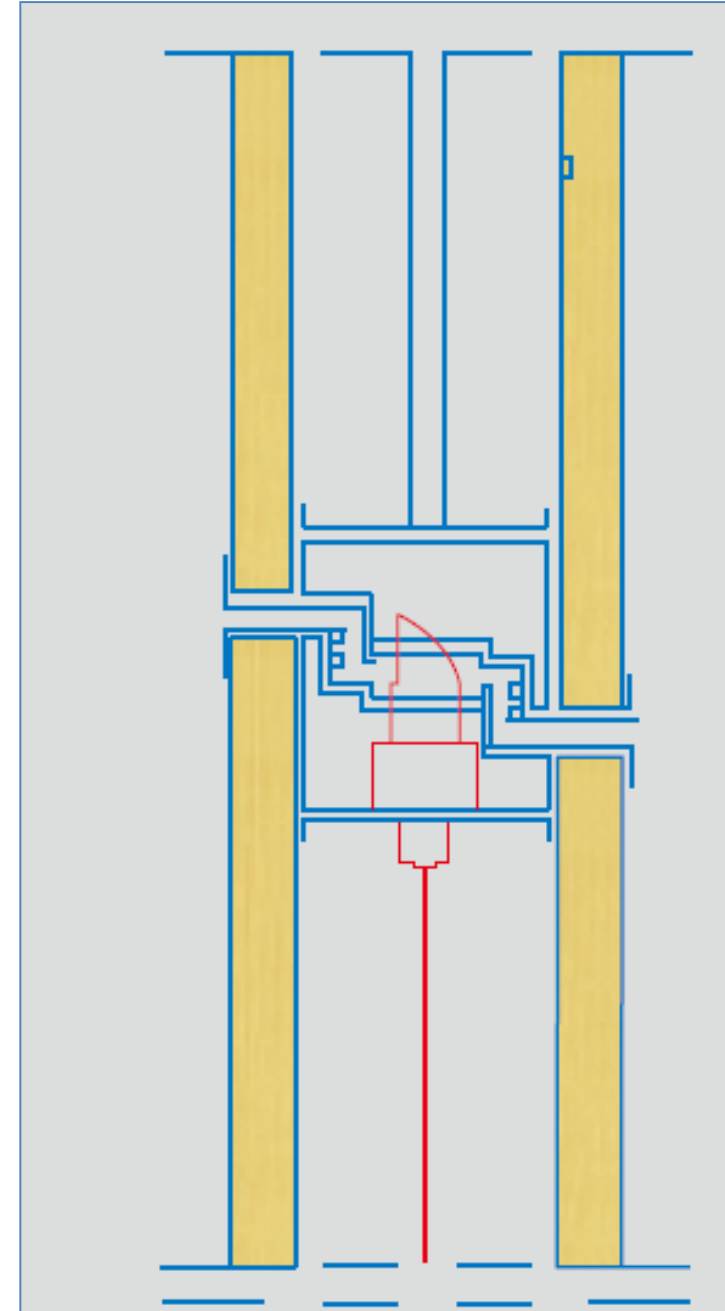
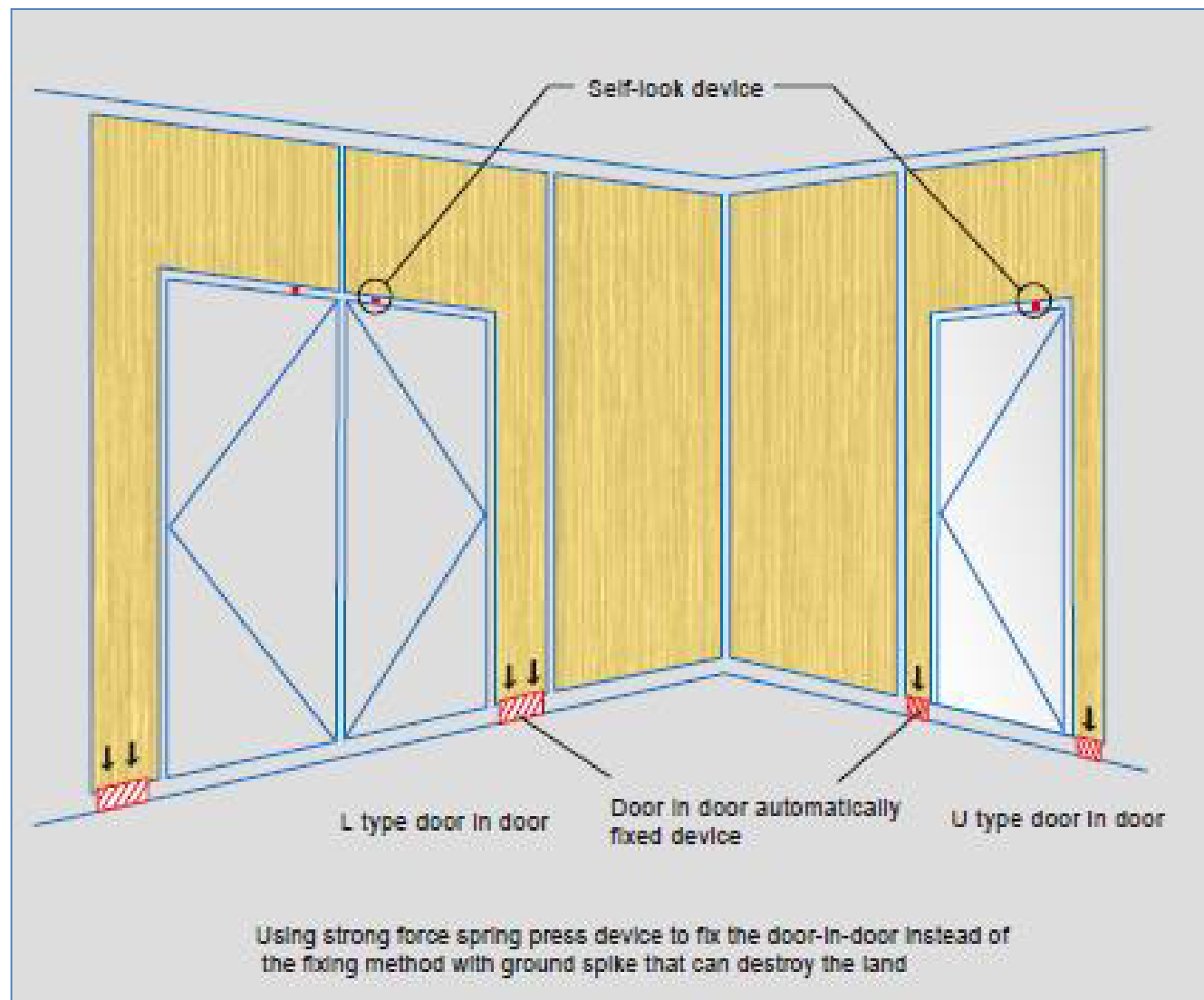




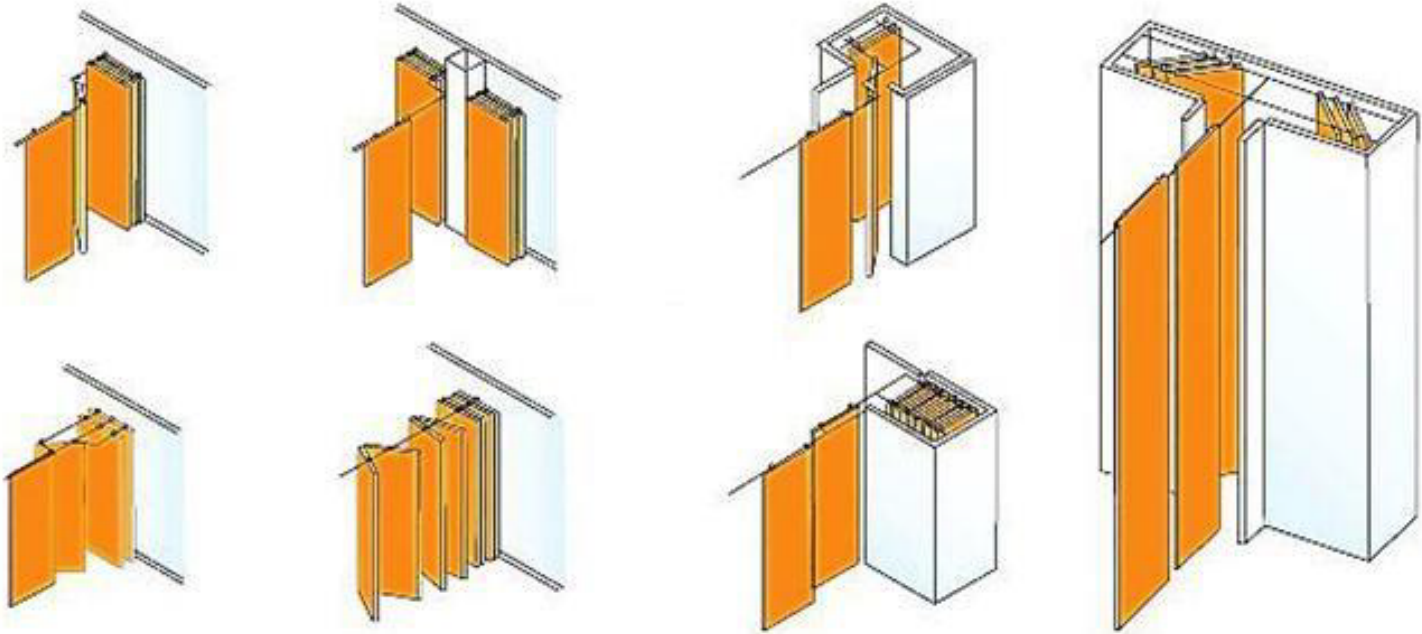
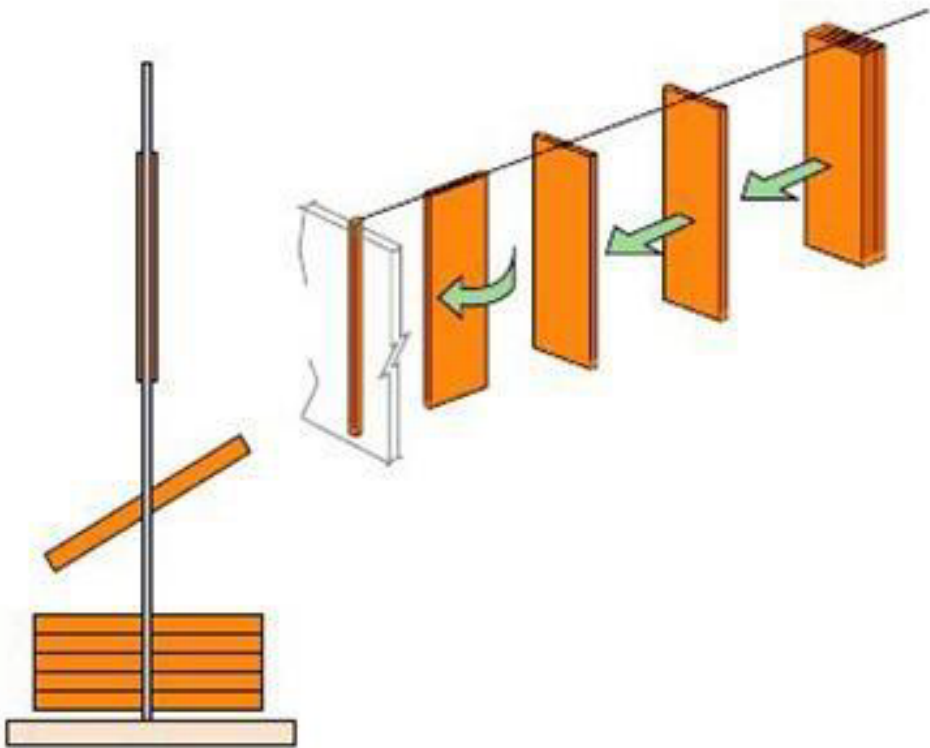
### **System alignment and levelling**

The track housing have utilized grooves with interlocking steel clips/pins for positive or perfect alignment of adjacent track section and shall be reinforced overhead by drop rod brackets in perfect water or leaser level. The aluminium track housing includes an integral nut slot which supports a hardened square nut for attaching each drop rod bracket to the top of the track. It allows approx. 35000 easy cycles or in short, a product developed for the life span of more than 15 years

# PASS DOOR SELF LOCK SYSTEM USING STRONG FORCE SPRING PRESS DEVICE TO FIX THE PASS DOOR LEAVING NO AIR GAP AT BOTTOM



**CENTER STACKING  
SINGLE TROLLEY SYSTEM**



**DOUBLE TROLLEY SYSTEM  
SITE, PARALLEL, OFFSITE AND OFF SITE PARALLEL**

**Double trolley system can have customized parking options subject to project requirement**

# PERFORMANCE MAJORS

## PRODUCT QUALITY

- **ACOUSTIC PARAMETERS**
- **NON-ACOUSTIC PARAMETERS**

## EFFICIENT EXECUTION

- **TIMELY DELEVERY AND INSTALLATION**
- **PROJECT MANAGEMENT**

## SERVICES

- **SALES AFTER SERVICES**
- **QUICK RESPONSE TIME**

**TO DELIVER A QUALITY PRODUCT WE ALL NEED TO WORK AS A TEAM, CLIENT SUPPORT SHALL BE HIGHLY APPRECIATED**

Ecotone has developed a versatile range of timber doors for a variety of applications. These doors are being installed to effectively control noise and fire-resisting in auditoriums, conference rooms, broadcasting studios, theatres and music practice rooms where noise pollution is one of the major concerns. Acoustic doors, tested in the accredited laboratory, equipped with compression seals around the periphery of the doors.

Openable Partitions comprise of panels which are moved one at a time and interlock to form a partition wall, with a sound seal extending top and bottom. This arrangement allows you to set up even the largest of installations with minimum of effort. In location the panels offer all the properties and appearance of a permanent partition wall. Adding space flexibility and sound reduction effects to office and retail spaces alike, first class product with first class service.

**HEAD OFFICE :**

912-13 Aaron Spectra , Behind Rajpath Club , Bodakdev, Ahmedabad

**GALLERY :**

Shop No.3 Ground Floor, Panchvilla Tower Nr. B.D. Rao Hall,  
Bhuyangdev Cross Road, Memnagar, Ahmedabad.-51

**FACTORY :**

Plot No - C-22,45 , Akshar Industrial Park,Opp. Zydus Cadila Pharma,  
Sarkhej Bavla Na

